



Collaborative Forecasts Implementation Guide

Version 1, Spring '17




CONTENTS

About the Collaborative Forecasts Implementation Guide	1
Tutorial #1: Setting Up Collaborative Forecasts for Your Organization	4
Step 1: Enable Collaborative Forecasts	4
Step 2: Set the Collaborative Forecasts Tab Visibility	6
Step 3: Decide Which Types of Forecasts to Use	6
Step 4: Enable One or More Forecast Types	8
Step 5: Choose Individual or Cumulative Forecast Rollups	9
Step 6: Define Your Organization's Default Collaborative Forecasts Date Range	10
Tutorial #2: Setting Up Your Collaborative Forecasts Users	12
Step 1: Enable Collaborative Forecasts Users	12
Step 2: Understand and Set Up Your Collaborative Forecasts Hierarchy	12
Step 3: Understand How Partner Portal Users Can Add Collaborative Forecasts Opportunities	15
Tutorial #3: Getting the Most From Collaborative Forecasts	16
Step 1: Customize Forecast Categories	16
Step 2: Enable Adjustments	17
Step 3: Set Up Your Collaborative Forecasts Currency	18
Step 4: Enable Quotas	19
Step 4.5 (Optional): Upload Quota Data	20
Step 5: Create a Forecasting Custom Report Type and Forecasting Report	23
Summary	29

ABOUT THE COLLABORATIVE FORECASTS IMPLEMENTATION GUIDE

USER PERMISSIONS

To use Collaborative Forecasts:	"Allow Forecasting"
To enable Collaborative Forecasts users:	"Manage Users" AND "Customize Application"
To add forecast types:	"Customize Application"
To adjust Collaborative Forecasts amounts:	"Override Forecasts"
To use quotas:	"Manage Quotas"
To see the forecasts of all other users:	"View All Forecasts"
To create or update custom report types:	"Manage Custom Report Types"
To delete custom report types:	"Modify All Data"


 **Note:** This implementation guide is for administrators setting up Collaborative Forecasts.

The *Collaborative Forecasts Implementation Guide* introduces you to setting up Collaborative Forecasts. Through a series of tutorials, you'll become familiar with the easy-to-use Collaborative Forecasts settings and features.

We'll start by quickly setting up Collaborative Forecasts for your organization. Next, we'll enable users who need to use Collaborative Forecasts in their jobs. Finally, we'll further enhance the forecasting experience for your users. When we finish the exercises, you'll possess a solid understanding of Collaborative Forecasts and feel confident administering it in your organization.



Conceptual Overview

Using forecasts, users can predict and plan the sales cycle from pipeline to closed sales, and manage sales expectations throughout the organization. A forecast is an expression of expected sales revenue based on the gross rollup of a set of opportunities. The forecast amounts on the forecasts page are totals and subtotals of the opportunities in the four forecast categories—Pipeline, Best Case, Commit, and Closed. Depending on how your admin sets up Salesforce, these amounts can reflect opportunities from one or multiple forecast categories. On the forecasts page, roll over the  (Salesforce Classic only) next to the column names to see which forecast categories roll up to the totals in each column. In the rollup table on the forecasts page, forecast amounts are organized by forecast rollup, time period, and optionally by product family (Salesforce Classic only). Forecasts can include adjustments made by forecast managers to their immediate subordinates' forecasts and adjustments made by forecast users to their own forecast amounts. Users can view their forecast amounts and related opportunities by forecast rollup for just one person or for everyone below them in the forecast hierarchy. For example, they can see the July Best Case forecast for all sales managers reporting to them, all the sales reps reporting to any one of their managers, or just one individual.

Forecasts can be based on opportunities, opportunity splits, or product families (Salesforce Classic only). Your organization can use up to 4 different types of forecasts, depending on your needs.

If You're Migrating from Customizable Forecasts to Collaborative Forecasts

- To enable Collaborative Forecasts, Customizable Forecasting must be disabled. Contact Salesforce for assistance with disabling Customizable Forecasting.
- When you turn off Customizable Forecasting, the Quotas related list no longer appears on User records. The Edit Personal Quota permission (API name: `PermissionsEditOwnQuota`) also no longer appears in the Profile object.

About the Collaborative Forecasts Implementation Guide

- If you have the original Territory Management feature enabled, disable Customizable Forecasting and original Territory Management before migrating to Collaborative Forecasts. To disable these features, contact Salesforce. You can enable and use Enterprise Territory Management and Collaborative Forecasts at the same time, but the two features aren't integrated to work together.
- When you migrate, the forecast history, overrides, reports, and sharing data from Customizable Forecasting are purged.
- Consider exporting forecasting report data so that you have a backup.
- Monthly forecasts is the default Collaborative Forecasts period. You can change your settings to quarterly. If you use custom fiscal years, your fiscal period is the default. You can also choose your custom quarters.
- The forecast hierarchy is retained. However, to reduce the risk of data loss, consider migrating to Collaborative Forecasts immediately after disabling Customizable Forecasts. After migrating, don't enable Forecasts users again. Validate all hierarchies for accuracy.
- Before migrating, make sure to review [What's the difference between the Forecasting versions?](#) to determine whether you can benefit from the latest improvements offered in Collaborative Forecasts.

Before You Begin

To benefit the most from this implementation guide, Salesforce suggests that the following already be created in your organization:

- Users
- Roles
- Accounts
- Opportunities
- Profiles

Implementation Guide Version

This implementation guide was revised for Spring '17. You should be able to successfully complete all tutorials using Collaborative Forecasts.

TUTORIAL #1: SETTING UP COLLABORATIVE FORECASTS FOR YOUR ORGANIZATION

Setting up Collaborative Forecasts is very easy, as you'll find out in this tutorial. We'll complete the steps of enabling Collaborative Forecasts, setting the tab visibility for the profiles that you select, adding one or more forecast types, choosing how your opportunities roll up to forecast amounts, and setting your organization's default date range.

Step 1: Enable Collaborative Forecasts

Let's begin by making sure that Collaborative Forecasts is enabled.

1. If you're using Lightning Experience, switch to Salesforce Classic.
2. From Setup, enter *Forecasts Settings* in the *Quick Find* box, then select **Forecasts Settings**. If Collaborative Forecasts isn't enabled, select **Enable Forecasts**. Once enabled, the Forecasts Settings page should look something like this:

Forecasts Settings

Enable Forecasts ⓘ

Select a forecast type

Choose forecast types to enable for your users. Your options are determined by your organization's other configurations. You can add up to 4 forecast types. Note that quantity forecasts are not available for some forecast types.

[Add a Forecast Type](#)

Enable forecast adjustments

Forecast users can adjust forecasts without affecting the amounts, close dates, or forecast categories of the related opportunity records. When you enable forecast adjustments, the setting applies to all forecast types, and each stores its own separate adjustment data. For Product Family forecasts, adjustments must be made to the product family totals instead of to their forecast category totals.

1. To allow forecast managers to adjust the forecast amounts of their immediate subordinates, enable **Manager Adjustments** on this page.
2. To allow all forecast users to adjust the forecast amounts on their own forecasts, enable **Owner Adjustments** on this page. Forecast managers cannot adjust the subtotals of the opportunities they own.
3. Enable adjustments for users. From Setup, click **Manage Users | Profiles**. Click **Edit** next to the profile you want and select the **Override Forecasts** checkbox.

Enable Manager Adjustments

Enable Owner Adjustments

Enable cumulative forecast rollups

The default forecast display includes separate rollup columns for opportunities in each individual forecast category—Closed, Commit, Best Case, and Pipeline.

You can choose instead to display cumulative rollup columns, which include opportunities in more than one category:

1. Closed Only (Closed opportunities only)
2. Commit Forecast (Commit + Closed opportunities)
3. Best Case Forecast (Best Case + Commit + Closed opportunities)
4. Open Pipeline (Pipeline + Best Case + Commit opportunities)

Enable Cumulative Forecast Rollups

Configure the default forecast display

Define the forecast period and default range. Usually, you'll set the forecast period to match how your organization runs its business. These settings apply to all forecast types. The user viewing a forecast can change the range.

Forecast Period

Starting on

Display

Forecasts will show:
6 months
May FY 2015 – October FY 2015

Select the default currency to display in forecasts. This setting applies to all forecast types. The user viewing a forecast can change the currency.

Forecast Currency

Display quota target amounts and attainment percentages for team members. This setting applies to all forecast types.

Show Quotas

Remember that if your organization doesn't use multiple currencies, you won't see a section for Forecast Currency.

3. Now click the Forecasts tab. If you don't see the tab and you're using Salesforce Classic, click + to view your tab options, and then click **Forecasts**. If you don't see the tab and you're using Lightning Experience, choose Forecasts from the App Launcher. If you see a screen with a title, "Introducing Forecasts," Collaborative Forecasts is not enabled.

Now we're set to go!

Step 2: Set the Collaborative Forecasts Tab Visibility

Next, we'll make sure that the right profiles can access the Forecasts tab. This doesn't take long at all!

1. From Setup, enter *Profiles* in the **Quick Find** box, then select **Profiles**.
2. Select a custom profile that needs access to the Forecasts tab and click **Edit**.
3. If you're using the enhanced profile user interface, click **Object Settings** and click **Forecasts**.
4. Set the Forecasts tab visibility to **Default On**.
5. Save your changes.

Remember to set the tab visibility for all profiles that need to use Collaborative Forecasts. For example, if you have profiles specific to sales users as well as sales managers, you'll also want to set the tab visibility for these profiles. You can always go back and make changes. As you add new profiles, you can set the Forecasts tab visibility for them as well.

Step 3: Decide Which Types of Forecasts to Use

You can choose up to four types of forecasts to use in Salesforce.

 **Note:** Product family forecasts view isn't available in Lightning Experience.

Forecast Type	What the Rollup Is Based On
Opportunities - Revenue	The opportunity <code>Amount</code> field.
Opportunities - Quantity	The opportunity <code>Quantity</code> field.
Product Families - Revenue	The opportunity <code>Amount</code> field. Forecast amounts are separated by product family. To use a Product Family forecast, use Opportunity Products and Product Families.
Product Families - Quantity	The opportunity <code>Quantity</code> field. Forecast amounts are separated by product family. To use a Product Family forecast, use Opportunity Products and Product Families.
Opportunity Splits - Revenue	The opportunity <code>Amount</code> field and each sales team member's split percentage. For Opportunity Splits - Revenue forecasts, the split percentages for each opportunity must total 100%. To use opportunity splits forecasts, enable Opportunity Teams, Opportunity Splits, and the Revenue split type.
Overlay Splits - Revenue	The opportunity <code>Amount</code> field and each overlay sales team member's split percentage. For Overlay Splits - Revenue forecasts, the split percentages don't need to total 100%. To use overlay splits forecasts, enable Opportunity Teams, Opportunity Splits, and the Overlay split type.
Custom Opportunity Currency Field - Revenue	The amount in the custom opportunity currency field that you specify. To use custom opportunity currency field forecasts,

Forecast Type	What the Rollup Is Based On
	Opportunity Teams and Opportunity Splits must be enabled. Enable a custom split type for the field, even if you don't intend to split credit for the field amount.
Expected Revenue - Revenue	The amount in the opportunity <code>Expected Revenue</code> field. To forecast on the <code>Expected Revenue</code> field, enable Opportunity Teams and Opportunity Splits. Enable a custom split type for the field, even if you don't intend to split credit for the field amount.

Opportunities

- To forecast on the `Amount` field of opportunities, use an opportunity revenue forecast.
- To forecast on the `Quantity` field of opportunities, use an opportunity quantity forecast.

Product Families

If your company groups its products and services into families and needs to forecast based on those families, use a product family forecast. With product families, keep the following in mind.

- Product family forecasts view isn't available in Lightning Experience.
- The Amount column appears in the opportunity list on the forecasts page.
- You can forecast on revenue, quantity, or both.
- Forecast users can view individual product family forecasts for each sales team member below them in the forecast hierarchy.
- Use Opportunity Products and Product Families.
- We recommend completing the `Product Family` field on each product record. Forecasts for products without a Product Family value appear in a forecast row titled Products Not Categorized. (If an opportunity lacks line items, the opportunity amount or quantity also appears in this row.)
- Adjustments can be made to the forecasts for a sales rep's product family forecasts but not directly to the rep's total forecast for all product families.
- You can set separate product family quotas for each sales rep but not a single quota for each sales rep.

Opportunity Splits

If your sales team uses team selling and opportunity splits, use an opportunity splits revenue forecast. With opportunity splits, keep the following in mind.

- You can forecast on revenue but not on quantity.
- You must have Team Selling, Opportunity Splits, and the Revenue split type enabled.

Overlay Splits

Use overlay splits to track revenue from sales team members who help close opportunities but aren't directly responsible for them.

- The overlay splits on a specific opportunity don't have to total 100%.
- You can forecast on revenue but not on quantity.

- You must have Team Selling, Opportunity Splits, and the Overlay split type enabled.

Custom Opportunity Currency Fields

If you use custom currency fields on opportunities, you can forecast on the amounts in those fields.


- Because the field must be a custom currency field, you can forecast on revenue but not quantity.
- You can forecast on the custom field regardless of whether it includes opportunity splits.
- Regardless of whether the field uses splits, you must have Team Selling, Opportunity Splits, and a custom split type enabled for the field.

Expected Revenue


If the value of the `Amount` field and the actual revenue brought in by the opportunity often differ, the `Expected Revenue` field on opportunities is useful. If your sales team anticipates this difference, consider using the `Expected Revenue` field and forecasting on it.

- You can forecast on revenue but not quantity.
- You can forecast on the `Expected Revenue` field regardless of whether you use opportunity splits with it.
- Regardless of whether you use splits with the `Expected Revenue` field, you must enable Team Selling, Opportunity Splits, and a custom split type for it.

Step 4: Enable One or More Forecast Types

 **Note:** Product family forecasts view isn't available in Lightning Experience. Opportunity split details in the opportunity summary on the forecasts page aren't available in Lightning Experience.

1. [Review the details](#) of each forecast type.
2. If you're using Lightning Experience, switch to Salesforce Classic.
3. From Setup, enter `Forecasts Settings` in the `Quick Find` box, then select **Forecasts Settings**.
4. Do one of the following.
 - If you don't have forecast types enabled, click **Add a Forecast Type**.
 - If you have at least one forecast type enabled, click **Add another forecast type**.
5. From the Forecast Type menu, choose the data source to use for the forecast.
6. Choose the forecast measurement to use: Revenue or Quantity. To use both, add a separate forecast type for each.
7. Choose the columns that you want to display in the related opportunities list on the forecasts page for the forecast type. If your forecast data source is opportunities or product families, the `Amount` field appears by default. If your data source is opportunity splits, the `Forecasted Amount` and `Split %` fields appear by default. You can change the selected fields for each forecast type even after it has been enabled. Depending on whether your forecast type uses the revenue or quantity measurement, consider adding `Amount` or `Quantity` to the pane.
8. Click **OK**, and then save your changes.
9. Repeat this procedure for each forecast type that you want to add.

 **Warning:** If you disable a forecast type, all related quota and adjustment information is purged.

Step 5: Choose Individual or Cumulative Forecast Rollups

Choose between two methods of rolling up opportunities into forecasts for your sales teams.

- Individual forecast category rollups combine the opportunities from each individual forecast category into separate forecast amounts for each category.
- Cumulative forecast rollups combine opportunities from multiple forecast categories into cumulative forecast amounts.

The default rollup setting is individual forecast category rollups. If you choose **Cumulative Forecast Rollups**, the way opportunities roll up to forecast amounts is different. The column names on the forecasts page are also different.

Category Rollup Method	Column Name on the Forecasts Page	Opportunities That Roll Up to It
Individual	Pipeline	Pipeline
	Best Case	Best Case
	Commit	Commit
	Closed	Closed
Cumulative	Open Pipeline	<ul style="list-style-type: none"> • Pipeline • Best Case • Commit
	Best Case Forecast	<ul style="list-style-type: none"> • Best Case • Commit • Closed
	Commit Forecast	<ul style="list-style-type: none"> • Commit • Closed
	Closed Only	Closed

Advantages of Cumulative Forecast Rollups

With individual forecast category rollups, each total and subtotal represents opportunities from only one of the individual forecast categories. This type of rollup means that if forecast users want to know the total that they're going to bring for the month or quarter, they need to add the Best Case, Commit, and Closed forecast amounts together.

Example: Individual Forecast Rollup				
Forecast amounts	Closed	Commit	Best Case	Pipeline
	\$50	\$100	\$150	\$200
Opportunities	Closed	Commit	Best Case	Pipeline
	\$50	<ul style="list-style-type: none"> • \$50 • \$50 	<ul style="list-style-type: none"> • \$50 • \$50 	<ul style="list-style-type: none"> • \$50 • \$50

Example: Individual Forecast Rollup

- \$50
- \$50
- \$50

With Cumulative Forecast Rollups, the forecast columns show cumulative amounts from the opportunities in the named forecast category and subsequent categories in your sales funnel. This view makes it easier for sales team members to see the total numbers that they're likely to bring in without combining the category totals themselves.

For example, this table shows the cumulative forecast rollup amounts when there are four Pipeline, three Best Case, two Commit, and one Closed opportunity, each worth \$50.

Example: Cumulative forecast rollup

Forecast amounts	Closed Only	Commit Forecast	Best Case Forecast	Open Pipeline
	\$50	\$150	\$300	\$450
Opportunities	Closed	Commit	Best Case	Pipeline
	\$50	<ul style="list-style-type: none"> • \$50 • \$50 	<ul style="list-style-type: none"> • \$50 • \$50 • \$50 	<ul style="list-style-type: none"> • \$50 • \$50 • \$50 • \$50

 **Note:** You can't use Forecast Historical Trending with Cumulative Forecast Rollups.

To choose Cumulative Forecast Rollups for your organization:

1. If you're using Lightning Experience, switch to Salesforce Classic.
2. From Setup, enter *Forecasts Settings* in the Quick Find box, then select **Forecasts Settings**.
3. Select **Enable Cumulative Forecast Rollups**, and then save your changes.

Step 6: Define Your Organization's Default Collaborative Forecasts Date Range

Now let's set a date range to use for Collaborative Forecasts. The range you select here is used as the default for the rollup table on the Forecasts tab. The Collaborative Forecasts rollup table displays forecast amounts for individual months or quarters and a range of months or quarters, depending on your Collaborative Forecasts settings. For example, if it's November and you select **Current month** for your Beginning Month and **6 months** for Months Displayed, your users see forecast data for November to April. Additionally, they can see forecast amounts for both individual months in the range and the total for six months. Typically, the default date range you select should coincide with your organization's sales cycle. The maximum date range is 12 months or 8 quarters.

1. If you're using Lightning Experience, switch to Salesforce Classic.
2. From Setup, enter *Forecasts Settings* in the Quick Find box, then select **Forecasts Settings**.

- Under Configure the Default Forecast Display, select a beginning period and the number of periods to display. Let's select **Current month** and **6 months**.

Configure the default forecast display

Define the forecast period and default range. Usually, you'll set the forecast period to match how your organization runs its business. These settings apply to all forecast types. The user viewing a forecast can change the range.

Forecast Period Monthly ▾

Starting on Current month ▾

Display 6 months ▾

Forecasts will show:
6 months
January FY 2014 – June FY 2014

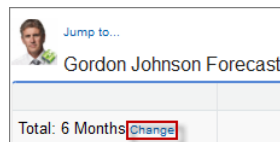
- Save your changes.

Users can use this default, or they can set a different date range display for their own forecasts. After users change their individual forecast date range displays, Salesforce admins can't override them. However, when changing the *period* display from monthly to quarterly or quarterly to monthly, the change is reflected in all users' forecasts.

Warning: If you change the time period from monthly to quarterly or quarterly to monthly, or you change the standard fiscal year, all adjustments and quotas are purged. If you enable custom fiscal years, creating the first custom fiscal year deletes any quotas and adjustments in the corresponding and subsequent standard fiscal years. These changes trigger a forecast recalculation that can take significant time, depending on the quantity of your data.

For example, say that a new vice president named Gordon joins your organization. The date range he sees displayed when he opens the Forecasts tab is the default setting of six months, beginning with the current month. He can use this default or he might prefer to view a four-month range instead. If so, from the Forecasts page he can:

- Click the upper-right dropdown list (Lightning Experience) or **Change** (Salesforce Classic).



- Select a beginning and ending period.

Forecast Range ✕

Define your forecast range.

Beginning Month January FY 2014 ▾

Ending Month June FY 2014 ▾

Current Month

6 Months Displayed

- Save the changes.


Before we move on, go back to the settings page. If you don't want to use **Current month** and **6 months** for your organization's default range, choose a different range. Remember to save any changes!

TUTORIAL #2: SETTING UP YOUR COLLABORATIVE FORECASTS USERS

Now that you've made sure your users can see the Collaborative Forecasts tab and you've selected a forecast default date range to display, we can move on. In this tutorial, we'll ensure that your users are set up to use Collaborative Forecasts. This only takes a few minutes.

Step 1: Enable Collaborative Forecasts Users

Let's enable the *individual* users within each profile who need forecasting ability. Why? By enabling individual users, you can retain granular control over access, even though you might have different groups using the same profile. For example, if you have both an accounts payable clerk and a sales manager assigned to the Standard User profile, you probably only want to give forecasting ability to the sales manager. There are two ways of enabling users—through the All Users page or the Forecasts Hierarchy page.

 **Warning:** If you migrated from Customizable Forecasts to Collaborative Forecasts, remember that the forecasting hierarchy is retained. Do not enable users again. Instead, validate all hierarchies to ensure they're accurate.

To enable Collaborative Forecasts through the All Users page:

1. From Setup, enter *Users* in the **Quick Find** box, then select **Users**.
2. For each user that you want to enable, click **Edit**. For example, if you have a user named Gordon Johnson that you want enabled for Collaborative Forecasts, click **Edit** next to his name.
3. Under General Information, select **Allow Forecasting**.
4. Save your changes.

When you enable users for Collaborative Forecasts, they're added to your forecasts hierarchy. Now you can go ahead and enable more users, or, to learn how to enable users directly through the Forecasts Hierarchy page, go to [Tutorial #2, Step 2](#).

Step 2: Understand and Set Up Your Collaborative Forecasts Hierarchy

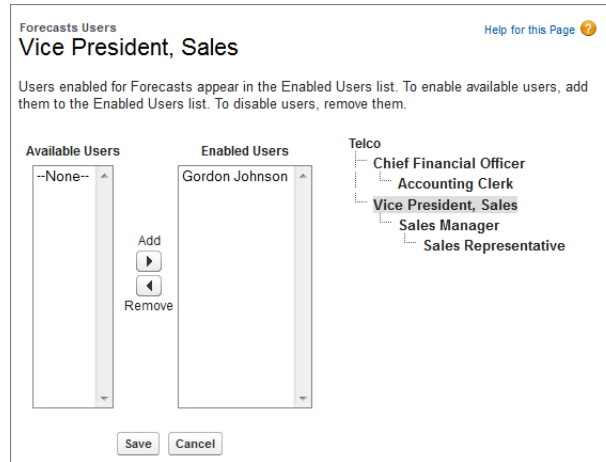
You're doing great! Remember that when you enable Forecasts users, they're added to the forecast hierarchy. The forecast hierarchy is a nested, expandable list of forecast users that determines how forecasts roll up within your company and who can view and adjust them. The forecast hierarchy is based on the role hierarchy and specifies which users are forecast managers. The forecast hierarchy is automatically generated based on your role hierarchy. For example, let's say that you enabled Collaborative Forecasts for the following users:

- One user in the Vice President, Sales role.
- Two users in the Sales Manager role, both reporting to the Vice President, Sales.

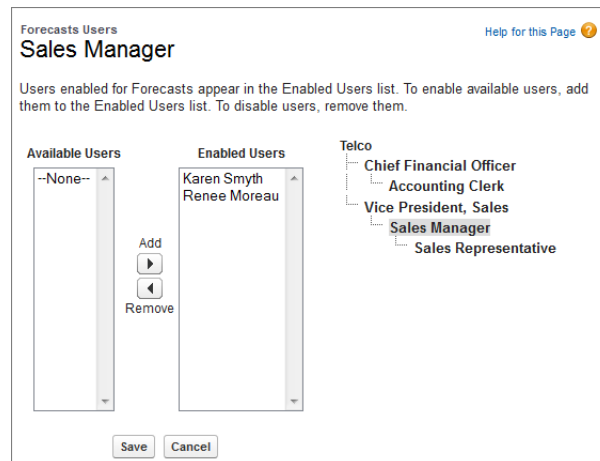
You'll see these users enabled in the forecasts hierarchy within their respective roles. If you haven't enabled forecasting for users, you can add them to the hierarchy now.

1. If you're using Lightning Experience, switch to Salesforce Classic.
2. From Setup, enter *Forecasts Hierarchy* in the **Quick Find** box, then select **Forecasts Hierarchy**.
3. Click **Expand All** to see the available roles.
4. Click **Enable Users** and then **Add** and **Remove** to move users between the Available Users list and the Enabled Users list. If you previously enabled a user from Setup by entering *Users* in the **Quick Find** box, selecting **Users**, and then editing a user page

to allow forecasting, the name appears in the Enabled Users list. For example, if you previously enabled a user named Gordon, you'll see his name displayed in Enabled Users.

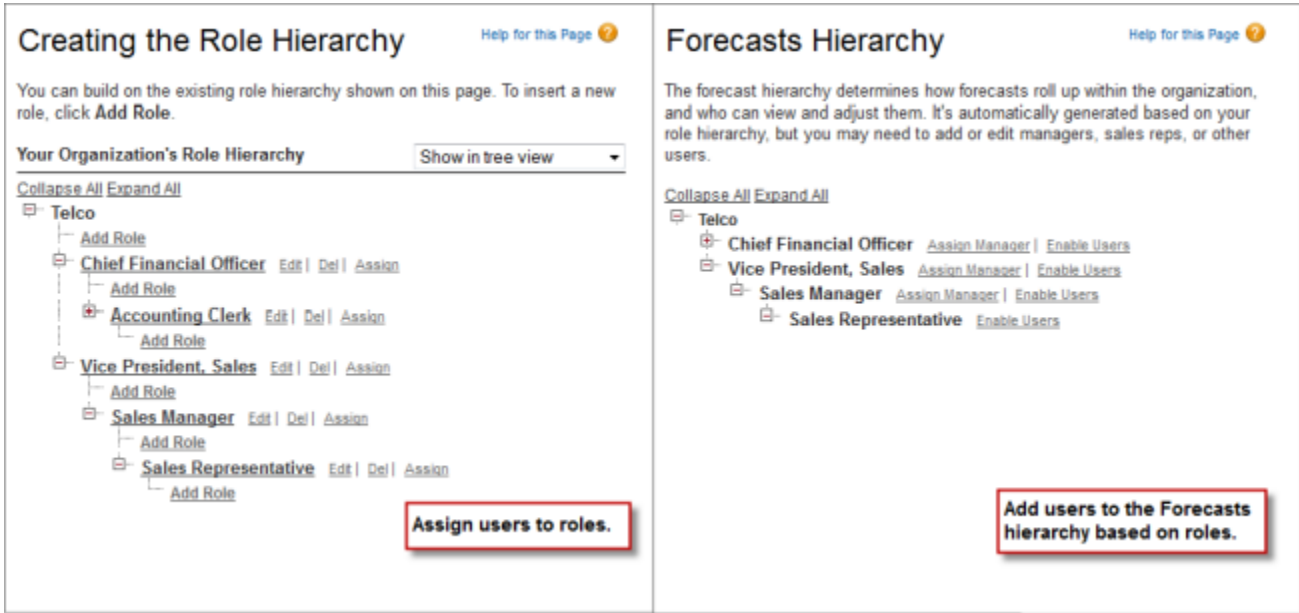


- Before we move on, go ahead and enable two or three users that need to use Collaborative Forecasts. Your screen might look something like this, where two users in the Sales Manager role have been enabled.



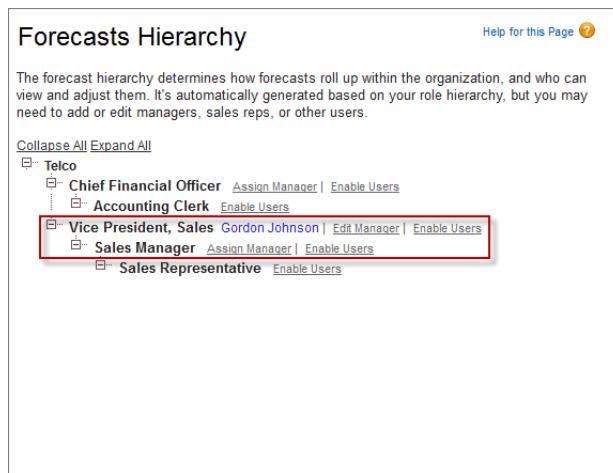
- Save your changes.

Note that even though the Sales Manager role might report to the Vice President, Sales in the *role hierarchy*, the users in the Sales Manager role won't automatically report to the Vice President, Sales in the *forecasts hierarchy*. You must enable a user in the forecasts hierarchy to act as Forecasts manager in order for them to be able to view their subordinates' forecasts. Only one person at each level in the forecasts hierarchy can be manager at one time. Let's enable a forecast manager next.



In the earlier example, we enabled a user named Gordon, who’s in the Vice President, Sales role and has people who report to him. However, he’s not a Forecasts manager, so Gordon can’t view the forecasts of his subordinates or make adjustments yet. Let’s enable a forecast manager:

1. If you’re using Lightning Experience, switch to Salesforce Classic.
2. From Setup, enter *Forecasts Hierarchy* in the Quick Find box, then select **Forecasts Hierarchy**.
3. To select a forecast manager for each manager role in the hierarchy, click **Edit Manager** next to the role, then select a name from the Forecast Manager drop-down list.
4. Save your changes.



Gordon, or whomever you designated as the Forecasts manager, can now view and adjust the forecasts of people who report to him in the Forecasts hierarchy. (We’ll go through how to enable adjustments in [Tutorial #3, Step 2.](#)) Additionally, he can easily traverse the hierarchy by clicking **Jump to...** (Salesforce Classic only), located above his name on the forecast page.



If you assigned the wrong person or need to reassign the Forecasts manager role to someone else, click **Edit Manager**.

Step 3: Understand How Partner Portal Users Can Add Collaborative Forecasts Opportunities

Partner portal users are external to your Salesforce org but sell your products and services through indirect sales channels. Your partner portal users use a portal to log in to Salesforce. Opportunities that a partner portal user creates can roll up to the forecast of the account owner. The account owner must be the person's forecast manager in the forecast hierarchy for the opportunities to roll up into the forecast. For example:

- Gordon Johnson owns a partner account called Acme.
- Gordon has an Acme contact named Anne Smith.
- Anne is a partner portal user.
- Anne reports to Gordon in the forecasts hierarchy.

If Anne adds opportunities in her portal, Gordon sees those opportunities in his forecast. Because Gordon is Anne's forecast manager, he can adjust forecast amounts based on her opportunities and see how she's tracking against her quota.

When working with partner portal users:

1. From Setup, enter *users* in the **Quick Find** box, then select **Users** and select the partner portal contact you created.
2. Make sure that the **Active** and **Allow Forecasting** checkboxes are selected.
3. Enable the partner portal user in the forecast hierarchy.

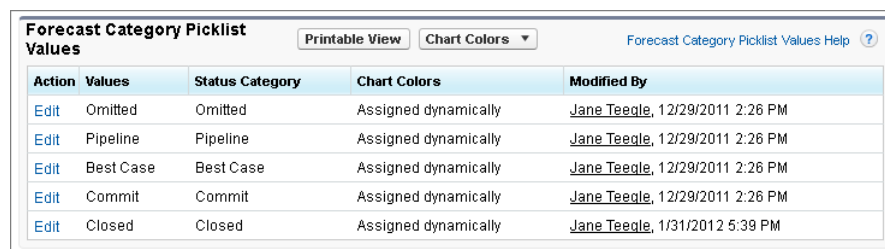
TUTORIAL #3: GETTING THE MOST FROM COLLABORATIVE FORECASTS

If you completed the first two tutorials, your users can already begin using Collaborative Forecasts. However, to help users best leverage the forecasting information that they see, let's look at what else we can do. In this tutorial, we'll walk through the steps to customize forecast categories, enable adjustments and quotas, set a forecast currency, and create forecasting custom report types.


Step 1: Customize Forecast Categories

When you first enable Collaborative Forecasts, you can use five categories. A forecast category is the category within the sales cycle to which an opportunity is assigned based on its opportunity stage. The standard forecast categories are Pipeline, Best Case, Commit, Omitted, and Closed. You can customize the forecast category names. If your organization needs to use categories with different names that make more sense for your business process, follow these steps:

1. From the management settings for opportunities, go to Fields.
2. Click **Forecast Category**.



Action	Values	Status Category	Chart Colors	Modified By
Edit	Omitted	Omitted	Assigned dynamically	Jane Teeple , 1/2/29/2011 2:26 PM
Edit	Pipeline	Pipeline	Assigned dynamically	Jane Teeple , 1/2/29/2011 2:26 PM
Edit	Best Case	Best Case	Assigned dynamically	Jane Teeple , 1/2/29/2011 2:26 PM
Edit	Commit	Commit	Assigned dynamically	Jane Teeple , 1/2/29/2011 2:26 PM
Edit	Closed	Closed	Assigned dynamically	Jane Teeple , 1/31/2012 5:39 PM

3. Click **Edit** for any value that you want to edit in the Forecasts Category Picklist Values. Let's go ahead and select **Commit**.
4. Enter a forecast category name. Go ahead and enter a new category name now. If you don't like it, we'll change it back in a minute.
5. Save your changes.
6. Click the Forecasts tab and look at the top of the page. If you chose to use individual forecast category rollups in Setup, you can see that the Commit column name has been replaced by your new name. If you chose cumulative forecast rollups, the name does not change, but the info bubble  (Salesforce Classic only) listing the categories it includes now shows your new name.
7. If you want to change the name back to Commit, return to the setup page and repeat the steps, replacing the new category name with Commit.

New forecast category names appear on opportunity records, and the Forecasts tab if you chose individual forecast category rollups in Setup. Remember that forecast categories map to opportunity stage values. An opportunity stage value is the current stage of an opportunity, such as Prospect or Proposal. Opportunity stage values correlate with forecast category values to determine how the opportunity contributes to a forecast. Not sure what the mappings are? That's okay. We'll check them right now.

1. Let's go back to where we were again. From the management settings for opportunities, go to Fields.
2. This time, click **Stage**.

Opportunity Stages Picklist Values						
Action	Stage Name	Type	Probability	Forecast Category	Chart Colors	Modified By
Edit Del	Prospecting	Open	10%	Omitted	Assigned dynamically	Jane Teeple , 1/31/2012 5:06 PM
Edit Del	Qualification	Open	10%	Omitted	Assigned dynamically	Jane Teeple , 1/31/2012 5:07 PM
Edit Del	Needs Analysis	Open	20%	Pipeline	Assigned dynamically	Jane Teeple , 1/31/2012 5:42 PM
Edit Del	Value Proposition	Open	50%	Pipeline	Assigned dynamically	Jane Teeple , 12/29/2011 2:26 PM
Edit Del	Id. Decision Makers	Open	60%	Pipeline	Assigned dynamically	Jane Teeple , 1/31/2012 5:49 PM
Edit Del	Perception Analysis	Open	70%	Best Case	Assigned dynamically	Jane Teeple , 1/31/2012 5:06 PM
Edit Del	Proposal/Price Quote	Open	75%	Commit	Assigned dynamically	Jane Teeple , 1/31/2012 5:07 PM
Edit Del	Negotiation/Review	Open	90%	Commit	Assigned dynamically	Jane Teeple , 1/31/2012 5:06 PM
Edit Del	Closed Won	Closed/Won	100%	Closed	Assigned dynamically	Jane Teeple , 1/31/2012 5:07 PM
Edit Del	Closed Lost	Closed/Lost	0%	Omitted	Assigned dynamically	Jane Teeple , 1/31/2012 5:24 PM

3. Scroll down to Opportunity Stages Picklist Values and look at the row for each stage name to see what forecast category it's mapped to.
4. Click **Edit** to change a mapping.
5. In the Forecast Category drop-down selections, select the category you want mapped to that stage.
6. Click **Save**.

What if you want to change the opportunity stage picklist values? You can do this, too.

1. From the management settings for opportunities, go to Fields.
2. Click **Stage**.
3. Under Opportunity Stages Picklist Values, click **New**.
4. Create your new opportunity stage and click **Save**.
5. Under Opportunity Stages Picklist Values, click **Replace**.
6. In the first box, type in the name of the opportunity stage you want changed.
7. From the drop-down list, select the new opportunity stage value.
8. Click **Replace**.
9. Click **Finished**.

Step 2: Enable Adjustments

We've already done a lot! Now let's make it possible for your forecast users to adjust forecasts. What is an adjustment? An adjustment shows forecast managers' or sales reps' judgment about the final amount that they expect a forecast's opportunities to bring in at the close of the forecast period. Some forecast managers need to adjust their own or a subordinate's forecast. For example, they know that some employees tend to be too optimistic or too conservative when assigning amounts to opportunities. Sales reps can also adjust their own forecasts if they think that opportunity amounts are understated or overstated. Forecast managers can adjust forecasts that include only gross opportunity amounts and forecasts that have adjustments made by someone else in their opportunity team. An adjustment doesn't change the underlying gross rollup amount—it just adds a layer of detail. If multiple types of forecasts are enabled, each forecast

type maintains separate adjustments. When enabled in Setup, managers, sales reps, or both can adjust forecast amounts in each of those forecasts. However, adjustments made in the opportunity-revenue-based forecast don't display as adjustments in any other forecast type. So, if you adjust an amount in the opportunity-revenue forecast from \$100,000 to \$90,000 and then switch your forecast view, you won't see an equivalent adjustment value in the opportunity-quantity forecast. If you change the forecast view back to the opportunity-revenue-forecast, you'll again see your adjustment of \$90,000.

The following forecast page contains an adjustment to the original amount of \$55,000.

	Closed	Commit	Best Case	Pipeline
Total: 2 Months (Change)	\$30,000.00	\$948,000.00	\$705,000.00	\$50,000.00
March FY 2013	\$30,000.00	\$898,000.00	\$705,000.00	\$0.00
Karen Smyth	\$0.00	\$50,000.00	\$0.00	\$0.00
Renee Moreau	\$30,000.00	\$25,000.00	\$35,000.00	\$0.00
Sushanth Reed	\$0.00	\$25,000.00	\$0.00	\$0.00
My Opportunities	\$0.00	\$82,000.00	\$0.00	\$0.00
April FY 2013	\$0.00	\$50,000.00	\$0.00	\$50,000.00

To enable adjustments for your users, let's go back to the setup area.

1. If you're using Lightning Experience, switch to Salesforce Classic.
2. From Setup, enter *Forecasts Settings* in the Quick Find box, then select **Forecasts Settings**.
3. Now make sure that adjustments are enabled.
 - To let forecast managers adjust their subordinates' forecast amounts, under Enable Forecast Adjustments, select **Enable Manager Adjustments**.
 - If you want to allow forecast managers and sales reps to adjust their own forecast amounts, under Enable Forecast Adjustments, select **Enable Owner Adjustments**.
4. Click **Save**.
5. Adjustments are enabled for your organization. Now we'll enable adjustments for the right profiles.
6. From Setup, enter *Profiles* in the Quick Find box, then select **Profiles**.
7. Find a custom profile for which you want adjustments enabled and click **Edit**.
8. If you're using the enhanced profile user interface, click **App Permissions** and click **Edit**.
9. Select **Override Forecasts** and click **Save**.

Step 3: Set Up Your Collaborative Forecasts Currency

We're ready to set up the forecast currency now. This information applies to organizations that use multiple currencies. If yours doesn't, jump ahead to [Tutorial #3, Step 4](#).

Before moving on, let's look at the different currency options and what they're used for:

Corporate Currency

The currency in which your organization's corporate headquarters reports revenue. Serves as the basis for all currency conversion rates.

Forecast Currency

Your corporate currency or each forecast owner's personal currency.

Forecast Display Currency

The currency that a user selects in which to display forecasts. The selection must be one of the currencies enabled for use in the organization and is made directly from the forecast page.

Personal Currency

A user's default currency for quotas, certain forecasting versions, and reports. This must be one of the active currencies for your organization. If you use [Collaborative Forecasts](#), your quota amounts display in your display currency.

When an administrator sets up Forecasts for an organization, a forecast currency is selected. Users also select a forecast display currency on the forecast page. Let's select a forecast currency right now.

1. If you're using Lightning Experience, switch to Salesforce Classic.
2. From Setup, enter *Forecasts Settings* in the Quick Find box, then select **Forecasts Settings**.
3. Under Forecast Currency, choose a forecast currency option. Remember that you won't see these currency options if your organization doesn't have multiple currencies enabled. Let's choose **Corporate Currency** for now. You'll see a warning message appear about adjustments. You shouldn't have any adjustments yet, so just click **OK**.
4. Save your changes.
5. Now click the Forecasts tab and notice the forecasts page. If you have a revenue-based forecast type enabled, you'll see the currency indicated.
6. To change the currency, select a different currency from the dropdown list (Salesforce Classic) or gear (Lightning Experience) in the upper right of the forecasts page. Notice that the corporate currency you selected earlier is indicated with some text. Select a currency different from your corporate currency to display the forecast. For example, if your organization has the Indian Rupee enabled as a currency, go ahead and select it, and then save your changes.
7. If you want to continue using the corporate currency as the forecast currency, you're done. If you want to set personal currency as the forecast currency for the organization, go back to the setup page.
 - a. From Setup, enter *Forecasts Settings* in the Quick Find box, then select **Forecasts Settings**.
 - b. Under Forecast Currency, choose **Forecast Owner's Personal Currency**.

Step 4: Enable Quotas

More than likely, if your organization uses Collaborative Forecasts, you'll want to allow users to use quotas, too. A quota is a monthly or quarterly sales goal that's assigned to a user. A manager's quota equals the amount that the manager and team are expected to generate together. The quota rollup is done manually by users and managers, and revenue or quantity data can be used.

If forecast quotas are enabled, quota data appears in these locations on the Forecasts tab. A column that contains the quota amount for a specific month and a row that contains the percentage attained for a specific month in a specific forecast rollup (Salesforce Classic only).

Let's go ahead and enable quotas for your organization.

1. If you're using Lightning Experience, switch to Salesforce Classic.
2. From Setup, enter *Forecasts Settings* in the Quick Find box, then select **Forecasts Settings**.
3. Under Configure the Default Forecast Display, select *Show Quotas*.
4. Click *Save*.

Once you enable quotas, users can click **Display Options** on their forecast pages and choose to show or hide quota data as needed.

To upload quotas for your users, use either the Data Loader or the APIs. Either method requires that your organization has API access enabled.

Step 4.5 (Optional): Upload Quota Data

Data Loader provides a simple point-and-click method for adding, inspecting, and editing data in Salesforce. APIs provide more flexibility but require you to write code. To use either method, make sure that API access is enabled. See [Data Loader](#) for details.

Add Quotas with Data Loader

Before you upload quotas, consider the version of Data Loader that you're using. For Data Loader v.30 and later, specify the forecast type of each quota that you plan to upload.

1. Query the User object for your users' IDs.

Use Data Loader to retrieve your users' IDs.

- a. From Setup, enter *Data Loader* in the **Quick Find** box, then select **Data Loader**.
 - b. Download and install Data Loader.
 - c. Launch Data Loader.
 - d. Click **Export**.
 - e. Enter your user name and password, and then click **Log in**.
 - f. Click **Next**.
 - g. Select the User object from the list.
 - h. Choose a file name and destination for the exported data.
 - i. Click **Next**.
 - j. Select the **Id** and **Name** fields.
 - k. Click **Finish** and then **Yes**.
 - l. Click **View Extraction**.
 - m. Click **Open in external program**.
 - n. Save the file in the .csv format. Add user names and IDs to your quotas spreadsheet before uploading it.
2. If you're using Data Loader v.30 or later, query the ForecastingType object to get the IDs of your forecast types. If you're not using Data Loader v.30 or later, skip to step 3.
 - a. Launch Data Loader.
 - b. Click **Export**.
 - c. Enter your user name and password, and then click **Log in**.
 - d. Click **Next**.
 - e. Click **Show all Salesforce objects**.
 - f. Select the Forecasting Type object from the list.
 - g. Choose a file name and destination for the exported data.
 - h. Click **Next**.
 - i. Select the **Id** and **DeveloperName** fields.

- j. Click **Finish** and then **Yes**.
 - k. Click **View Extraction**.
 - l. Click **Open in external program**.
 - m. Save the file in the .csv format.
 - n. Note the `DeveloperName` and `Id` values for each active forecast type. Not all companies use all forecast types that appear in the results. Review this list if you're not sure which forecast type a specific `DeveloperName` refers to.
 - `OpportunityRevenue` : Opportunities - Revenue
 - `OpportunityQuantity` : Opportunities - Quantity
 - `OpportunitySplitRevenue` : Opportunity Revenue Splits - Revenue
 - `OpportunityOverlayRevenue` : Opportunity Overlay Splits - Revenue
 - `OpportunityLineItemRevenue` : Product Families - Revenue
 - `OpportunityLineItemQuantity` : Product Families - Quantity
 - The name of a custom opportunity split type that has been enabled as a forecast type. Custom split types are based on currency fields, which can contain revenue amounts only.
 - o. Add columns for `DeveloperName` and `Id` to your quota spreadsheet, and then add the name and ID of the forecast type of your quotas to each row. The name is not necessary for uploading quotas, but it helps to know which forecast type you're working with in each row.
3. Prepare your quota spreadsheet for upload.
- If you're using Data Loader v.30 or later, create a .csv file with columns for User Name, User ID, Forecast Type Name, Forecast Type ID, Quota Amount, Quota Quantity, Currency Code, and forecast period Start Date [yyyy-mm-dd or yyyy-mm-ddThh:mm:ss.sssZ; for example, 2012-03-01T08:00:00.00Z].
 - If you're using Data Loader v.29 or earlier, create a .csv file with columns for User Name, User ID, Quota Amount, Quota Quantity, Currency Code, and forecast period Start Date [yyyy-mm-dd or yyyy-mm-ddThh:mm:ss.sssZ; for example, 2012-03-01T08:00:00.00Z]. If you use revenue *and* quantity forecasts, specify the quotas for them on separate rows of your .csv file.

You don't need the User Name or Forecast Type Name columns, but including them makes it easy to understand the contents of your .csv file.

User Name	User ID	Forecast Type Name (for Data Loader v.30 or later)	Forecast Type ID (for Data Loader v.30 or later)	Quota Amount	Quota Quantity	Currency Code	Start Date
Kevin Bailey	00599000000Hofh	OpportunityRevenue	0DbD00000001eQBKAY	250000		USD	2012-03-01
Kevin Bailey	00599000000Hofh	OpportunityRevenue	0DbD00000001eQBKAY	250000		USD	2012-04-01
Kevin Bailey	00599000000Hofh	OpportunityRevenue	0DbD00000001eQBKAY	250000		USD	2012-05-01
Kevin Bailey	00599000000Hofh	OpportunityQuantity	0DbD00000001eQAKAY		500		2012-03-01
Kevin Bailey	00599000000Hofh	OpportunityQuantity	0DbD00000001eQAKAY		500		2012-04-01
Kevin Bailey	00599000000Hofh	OpportunityQuantity	0DbD00000001eQAKAY		500		2012-05-01

If your forecast data source is product families, include a Product Family column. (Product family forecasts view isn't available in Lightning Experience.)

User Name	User ID	Forecast Type Name (for Data Loader v.30 or later)	Forecast Type ID (for Data Loader v.30 or later)	Product Family	Quota Amount	Quota Quantity	Currency Code	Start Date
Kevin Bailey	00599000000Hofh	OpportunityLineItemRevenue	0DbD00000001eQ9KAI	Hardware	250000		USD	2012-03-01
Kevin Bailey	00599000000Hofh	OpportunityLineItemRevenue	0DbD00000001eQ9KAI	Software	150000		USD	2012-03-01
Kevin Bailey	00599000000Hofh	OpportunityLineItemRevenue	0DbD00000001eQ9KAI	Services	50000		USD	2012-03-01
Kevin Bailey	00599000000Hofh	OpportunityLineItemQuantity	0DbD00000001eQ8KAI	Hardware		500		2012-03-01
Kevin Bailey	00599000000Hofh	OpportunityLineItemQuantity	0DbD00000001eQ8KAI	Software		300		2012-03-01
Kevin Bailey	00599000000Hofh	OpportunityLineItemQuantity	0DbD00000001eQ8KAI	Services		100		2012-03-01

4. Use Data Loader to upload your quota information to Salesforce.
 - a. Launch Data Loader.
 - b. Click **Insert**.
 - c. Log in with your user name and password.
 - d. Click **Next**.
 - e. Click **Show All Salesforce Objects**.
 - f. Select the Forecasting Quota object from the list.
 - g. Click **Browse**, and then choose the .csv file to upload.
 - h. Click **Next**.
 - i. Click **OK** in the Data Selection dialog box.
 - j. Click **Create or Edit a Map**.
 - k. Map columns to fields in the ForecastingQuota object as shown in this table.

Column Headers in CSV File	ForecastingQuota Fields
User ID	QuotaOwnerID
Quota Amount	QuotaAmount
Quota Quantity	QuotaQuantity
Currency Code	CurrencyIsoCode
Start Date	StartDate
Product Family (needed only when the forecast data source is Product Families)	ProductFamily
Forecast Type ID (needed only for Data Loader v.30 or later)	ForecastingTypeID

- l. Click **OK**.
- m. Click **Next**.

- n. Click **Browse**, and then choose the directory where you want to save the log file containing messages about the success or failure of the upload.
- o. Click **Finish**.
- p. Click **Yes** to proceed with the upload.
- q. Click **OK**.

As a best practice, load quota data in the quota owner's [personal currency](#). You can still upload quota data using the API even if `Show Quotas` is disabled. If your Data Loader time zone setting is ahead of quota owners' time zones, the month can be off by one. To avoid this problem, use a date greater than or equal to the third day of each month when inserting quotas.

Uploading Quotas with the API

When uploading quota information with the API, be sure to use the correct API version, depending on the type of quota data that you're working with. If multiple types of forecasts are enabled, each forecast type maintains separate quota information.

When importing...	Use API version...
Revenue quotas for opportunity-based forecasts	25.0 or later
Quantity quotas for opportunity-based forecasts	28.0 or later
Revenue quotas for opportunity splits-based forecasts	29.0 or later
Revenue or quantity quotas for product family-based forecasts	29.0 or later
Quotas in orgs with multiple forecast types enabled	30.0 or later

Step 5: Create a Forecasting Custom Report Type and Forecasting Report

To make a forecasting report available to users, administrators must create a custom report type. A *report type* defines the set of records and fields available to a report based on the relationships between a primary object and its related objects. Reports display only records that meet the criteria defined in the report type. Use this table to understand the forecasting report types that you can create.

Primary Object	Use to create a report for...
Forecasting Items	<p>Viewing information about forecasting amounts, including adjustment amount information. As a best practice, if you use a forecast type based on revenue, use these default fields in the report type.</p> <ul style="list-style-type: none"> • Owner Only Amount—The sum of a person's revenue opportunities, without adjustments. For example, if you own two opportunities, each worth \$10,000, the Owner Only Amount is \$20,000. • Amount Without Adjustments—The sum of a person's owned revenue opportunities and the person's subordinates' opportunities, without adjustments. Subordinates include everyone reporting up to a person in the forecast hierarchy. This amount is visible only on reports. For example, if the sum of the amount of all opportunities owned by you is \$20,000, and the sum of the amount of your subordinates' opportunities is \$55,000, the Amount Without Adjustments is \$75,000. • Amount Without Manager Adjustments—The forecast number as seen by the forecast owner. This is the sum of the owner's revenue opportunities and the owner's subordinates' opportunities, including adjustments made by the forecast owner on the owner's or subordinates' forecasts. It doesn't include adjustments made by forecast managers above the owner in the forecast hierarchy.

Primary Object

Use to create a report for...

For example, Anne has an Amount Without Adjustments of \$75,000, made up of \$20,000 of her own opportunities and \$55,000 of opportunities owned by Ben, her subordinate. She adjusts Ben’s amount to \$65,000 for a total of \$85,000. If you adjust Anne’s number from \$85,000 to \$100,000, you see \$85,000 in Amount Without Manager Adjustments, because Anne sees this amount (and Anne can’t see your adjustments because you’re her manager). To see the amount that includes your adjustment to \$100,000, look at Forecast Amount.

- Forecast Amount—The revenue forecast from the forecast manager’s perspective and the sum of the owner’s and subordinates’ opportunities, including all forecast adjustments. For example, you’re a forecast manager and have another forecast manager reporting to you who has an Amount Without Manager Adjustment totaling \$85,000. If you adjust the forecast to \$100,000, the Forecast Amount is \$100,000.

If you use a forecast type based on quantity, use these default fields in the report type.

- Owner Only Quantity, Quantity Without Adjustments, Quantity Without Manager Adjustments, and Forecast Quantity

Regardless of whether you forecast based on revenue or quantity, add these fields.


- Has Adjustment—A checkbox that indicates whether a manager adjustment has been made on a forecast owner’s amount.
- Has Owner Adjustment—A checkbox that indicates whether a forecast user has adjusted the user’s own forecast amount.

If you use cumulative forecast rollups, add this field to your report.

- ForecastingItemCategory—This field indicates which rollup each forecast amount is for: Open Pipeline, Best Case Forecast, Commit Forecast, Closed Only, Pipeline, Best Case, Commit, or Closed. If you changed the forecast category names, those changes appear in the ForecastingItemCategory values.

Forecasting Items with Opportunities as a related object

Viewing opportunity information for specific forecasting line items. For example, you can create a summary report for each of your subordinates that includes the opportunity names and last activity dates for their forecasting items, with adjustment information and final forecast amounts.


-  **Note:** For opportunities with no opportunity products specified, this report type includes two forecasting items: one for the Opportunity-Revenue forecast type and one for the Product Family forecast type. These product family forecasting items roll up into the Products Not Specified row of the Product Family forecast.

Forecasting Items with Opportunity Splits as a related object

Viewing opportunity split information for specific forecasting line items. For example, you can create a summary report for each of your subordinates that includes the opportunity split amounts and percentages for their forecasting items, with adjustment information and final forecast amounts.

Forecasting Items with Opportunity Product as a related object

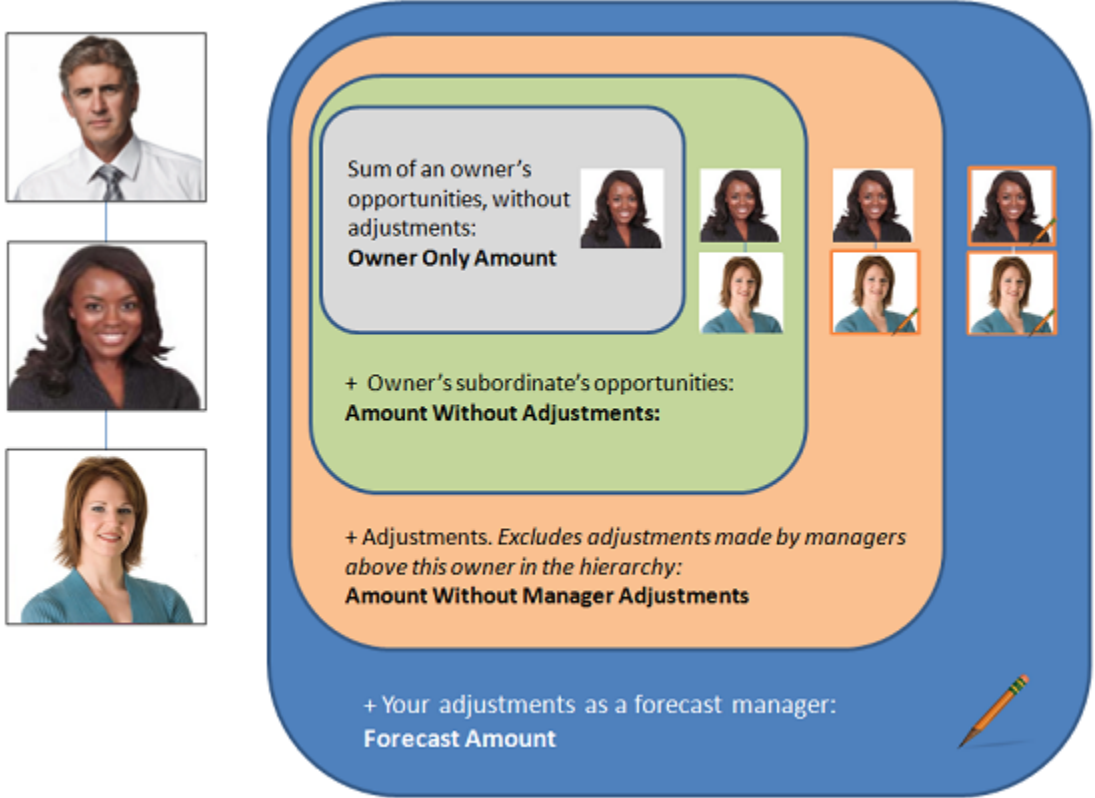
Viewing product family information for specific forecasting line items. For example, you can create a summary report for each of your subordinates that includes the product families and total price for their forecasting items, with adjustment information and final forecast amounts.

-  **Note:** This report type shows forecasting items only for the Product Family-Revenue and Product Family-Quantity forecast types. It includes opportunities with and without opportunity products specified.

Primary Object	Use to create a report for...
Forecasting Quotas	Viewing data about individual or team quotas. As a best practice, include all the default fields in the report type. For example, you can include lookup fields, such as the full name of the owner. When running the report, you can filter by your name to see quotas that you created and their related accounts and owners.
Forecasting Quotas with Forecasting Items as a related object	Viewing quota attainment. For example, you can use Forecasting Quotas and Forecasting Items to create the custom report type. Then, when you create the report, include a team's quotas and forecasted revenue for closed forecasts and create a formula field to display the attained quota percentage.

Notice that the first four fields described in the Forecasting Items report type were **Owner Only Amount**, **Amount Without Adjustments**, **Amount Without Manager Adjustments**, and **Forecast Amount**. Add these fields to compare individual forecast amounts, team forecast amounts, and amounts with adjustments (if there are any) for specific team members. (**Has Adjustment** is simply a check box to indicate if an adjustment exists. **Has Owner Adjustment** indicates whether a forecast user adjusted their own forecast amount.)

For example, Gordon is a forecast manager with Pam reporting to him. Pam has one subordinate of her own. Let's say Gordon runs a report based on the Forecasting Item report type and includes the four fields for his entire team. The image indicates what amounts Gordon sees for Pam. An orange outline indicates an adjustment's been made to the amount. For instance, in **Amount Without Manager Adjustments** Gordon sees the combined amount of Pam's opportunities and her subordinate's opportunities, including adjustments made by Pam to her subordinate's amount.

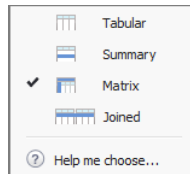


Creating forecasting custom report types is easy and only takes a few minutes to do. Let's go ahead and create a Forecasting Items custom report type, and a report, and then publish the report for your users. This report shows the total forecast amounts for all of a forecast manager's subordinates, grouped by month and forecast rollup.

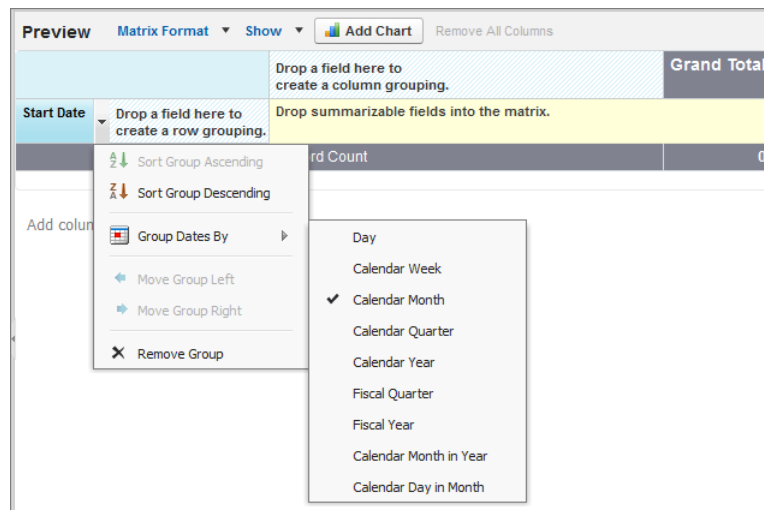
1. From Setup, enter *Report Types* in the *Quick Find* box, then select **Report Types**.
2. Click **New Custom Report Type**.
3. Add the following information:
 - For Primary Object select **Forecasting Items**.
 - For Report Type Label, enter Forecasting Items.
 - Add a description.
4. For Store in Category, select Forecasts.
5. Select **Deployed**.
6. Click **Next** and then **Save**.

Now click the Reports tab to create a report based on the Forecasting Items custom report type.

1. Click **New Report....**
2. Expand **Forecasts**.
3. Select **Forecasting Items**—the report type you just created—and click **Create**.
4. In the preview panel, change the format from **Tabular** to **Matrix**.



5. Create a row grouping. From the fields pane, drag *Start Date* into the preview panel and in the field's drop down menu, select **Group Dates By > Calendar Month**.



6. Create a column grouping. From the fields pane, drag *Forecast Category* into the preview panel.

7. Add summarizable fields. From the fields pane, drag `Forecast Amount` into the preview panel.
 - a. Select **Sum**.
 - b. Click **Apply**.
8. Click **Show** and deselect **Record Count**.

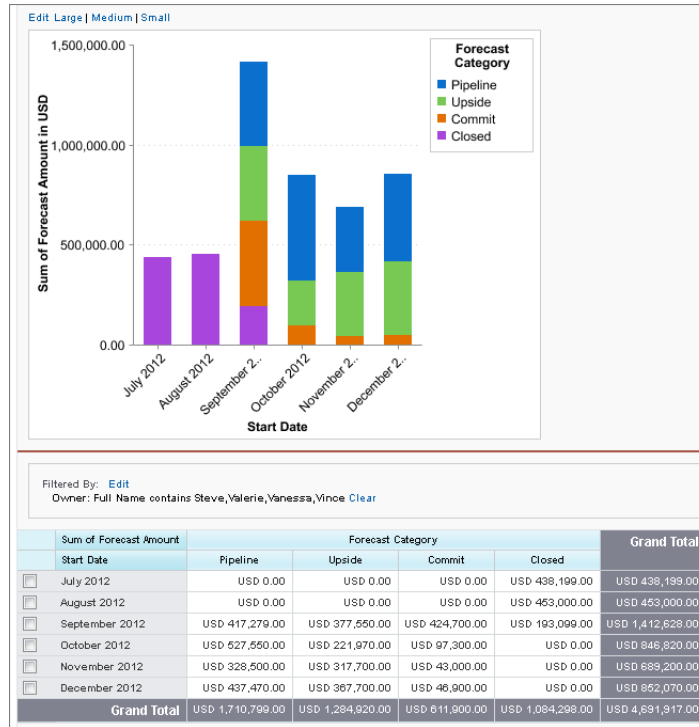


9. Create a report filter by updating **Date Field** and selecting `Start Date`.
10. Make a range selection. Since you don't have a lot of data, you can select **All Time**.
11. Add a new filter. Click **Add**.
12. Select **Owner: Full Name > Contains** and type the name or names of users to include in your report. Click **OK**. Alternatively, you can select **All forecasting items** in the Show drop-down menu to see all items for the time period you specified, including your direct reports, or **My direct reports' forecasting items** to see all items for the specified period for only your direct reports.
13. Add another new filter. Click **Add**.
14. Select **Forecasting Type: API Name > Equals** and type the name of the forecast type you want to report on. It should be one of the forecast types you added earlier in this workbook. Your choices include:
 - `OpportunityRevenue` : Opportunities - Revenue
 - `OpportunityQuantity` : Opportunities - Quantity
 - `OpportunitySplitRevenue` : Opportunity Revenue Splits - Revenue
 - `OpportunityOverlayRevenue` : Opportunity Overlay Splits - Revenue
 - `OpportunityLineItemRevenue` : Product Families - Revenue
 - `OpportunityLineItemQuantity` : Product Families - Quantity
 - The name of a custom opportunity split type that has been enabled as a forecast type. Custom split types are based on currency fields, which can contain revenue amounts only.
15. Click **Save** and enter a report name and description. Save the report in **Unified Public Reports**.

Optionally, add a chart.

1. If you are still on the report screen, click **Close**. Click the **Dashboards** tab.
2. Click **Go to Dashboard List** and then **New Dashboard...**
3. Click **Data Sources**, select the report you just created, and drag it to the dashboard.
4. Click **Components**, select the type you want to use, and drag it onto your source report in the dashboard.
5. Edit the title, header, and footer of the chart so that it reflects the details you need.

Your report and chart might look something like this:



Let's create one more report for practice. This time we'll create a matrix report for sales executives who want to see the quota percentages reached by their sales reps. Let's start by creating the new report type.

1. Start creating a new custom report type using **Forecasting Quotas** as the primary object.
2. Select Forecasting Items as the related object.
3. Fill in the report type label and other fields and click **Next**.
4. Click **(Click to relate another object)** and select **Forecasting Items**.
5. Click **Save**.

Now we'll create the matrix report.

1. Create a new report using the custom report type you just created based on **Forecasting Quotas** and **Forecasting Items**.
2. In the preview panel, change the format from **Tabular** to **Matrix**.
3. Filter by **Start Date** and select your date range.
4. From the Forecasting Items fields, drag **Owner: Full Name** to create a row grouping and drag **Start Date** to create a column grouping.
5. From the Forecasting Quotas fields, drag **Quota Amount** into the summarizable fields section, select **Sum**, and click **Apply**.
6. From the Forecasting Items fields, drag **Forecast Amount** into the summarizable fields section, select **Sum**, and click **Apply**.
7. From Fields, double-click **Add Formula** and in Column Name, type **% of Quota Attained**. For Format, select **Percent** and for Decimal Places, select **0**.
8. In the Formula box, click **Summary Fields** and select **Forecast Amount > Sum**. From Operators, select **/ Divide** and from **Summary Fields** select **Quota Amount > Sum**.
9. Click **OK**.
10. Click **Save** and enter a report name and description. Save the report in **Unified Public Reports**.

Your report might look something like this:

Filtered By: Edit				
Owner: Full Name not equal to Gordon Johnson Clear				
	Owner: Full Name		Created Date	Grand Total
			3/29/2013	
<input type="checkbox"/>	<u>Amber Delaney</u>	Sum of Quota Amount	\$409,000	\$409,000
		Sum of Forecast Amount	\$0	\$0
		% Attained	0.0%	0.0%
		Record Count	1	1
<input type="checkbox"/>	<u>Karen Smyth</u>	Sum of Quota Amount	\$11,000	\$11,000
		Sum of Forecast Amount	\$12,000	\$12,000
		% Attained	109.1%	109.1%
		Record Count	1	1
<input type="checkbox"/>	<u>Renee Moreau</u>	Sum of Quota Amount	\$150,000	\$150,000
		Sum of Forecast Amount	\$115,000	\$115,000
		% Attained	76.7%	76.7%
		Record Count	3	3
<input type="checkbox"/>	<u>Sushanth Reed</u>	Sum of Quota Amount	\$50,000	\$50,000
		Sum of Forecast Amount	\$48,000	\$48,000
		% Attained	96.0%	96.0%
		Record Count	2	2
	Grand Total	Sum of Quota Amount	\$620,000	\$620,000
		Sum of Forecast Amount	\$175,000	\$175,000
		% Attained	28.2%	28.2%
		Record Count	7	7

Summary

You've done a lot! Let's recap what you've accomplished:

- Enabled Collaborative Forecasts from Setup.
- Set the Collaborative Forecasts tab visibility.
- Enabled at least one forecast type.
- Defined your organization's default Collaborative Forecasts date range.
- Enabled Collaborative Forecasts users.
- Gained a better understanding of the difference between role hierarchy and forecast hierarchy and how they interact.
- Learned about the forecast hierarchy and assigned managers.
- Optionally, you may have customized your forecast categories, enabled adjustments for your organization, set up your forecasts currency, enabled quotas, and created forecasting custom report types.

Keep this implementation guide handy in case you need to make additional refinements to your setup.